

# Recycling Network Breakfast

1<sup>st</sup> October 2019



REGENT  
STREET  
MANAGEMENT  
DIRECT

INSPIRING NEW  
TRADITIONS

# Objectives

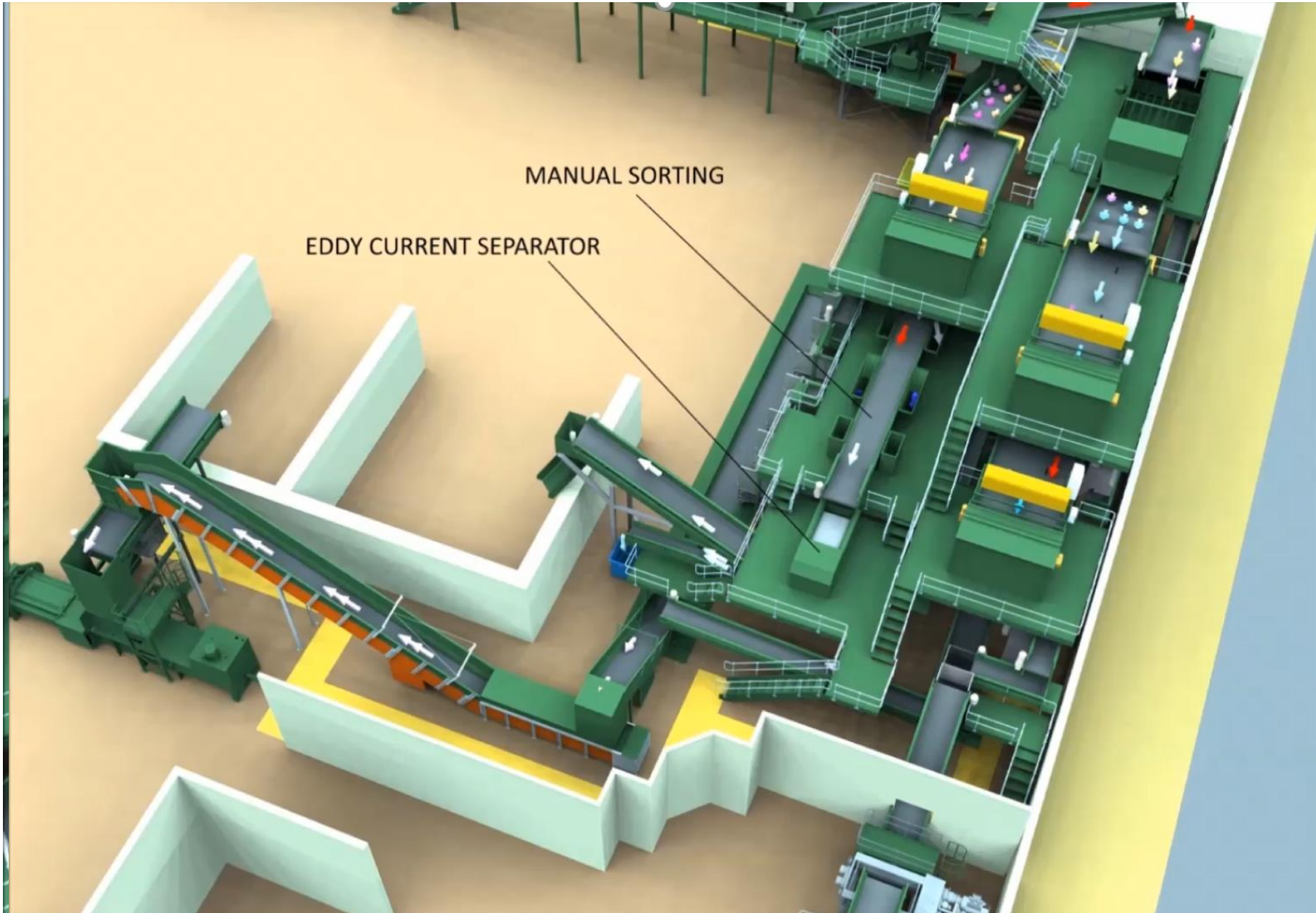
1. Where does your recycling go?
2. What can be recycled?
3. How is Regent Street doing?
4. What challenges do we face?
5. Where do we go from here?



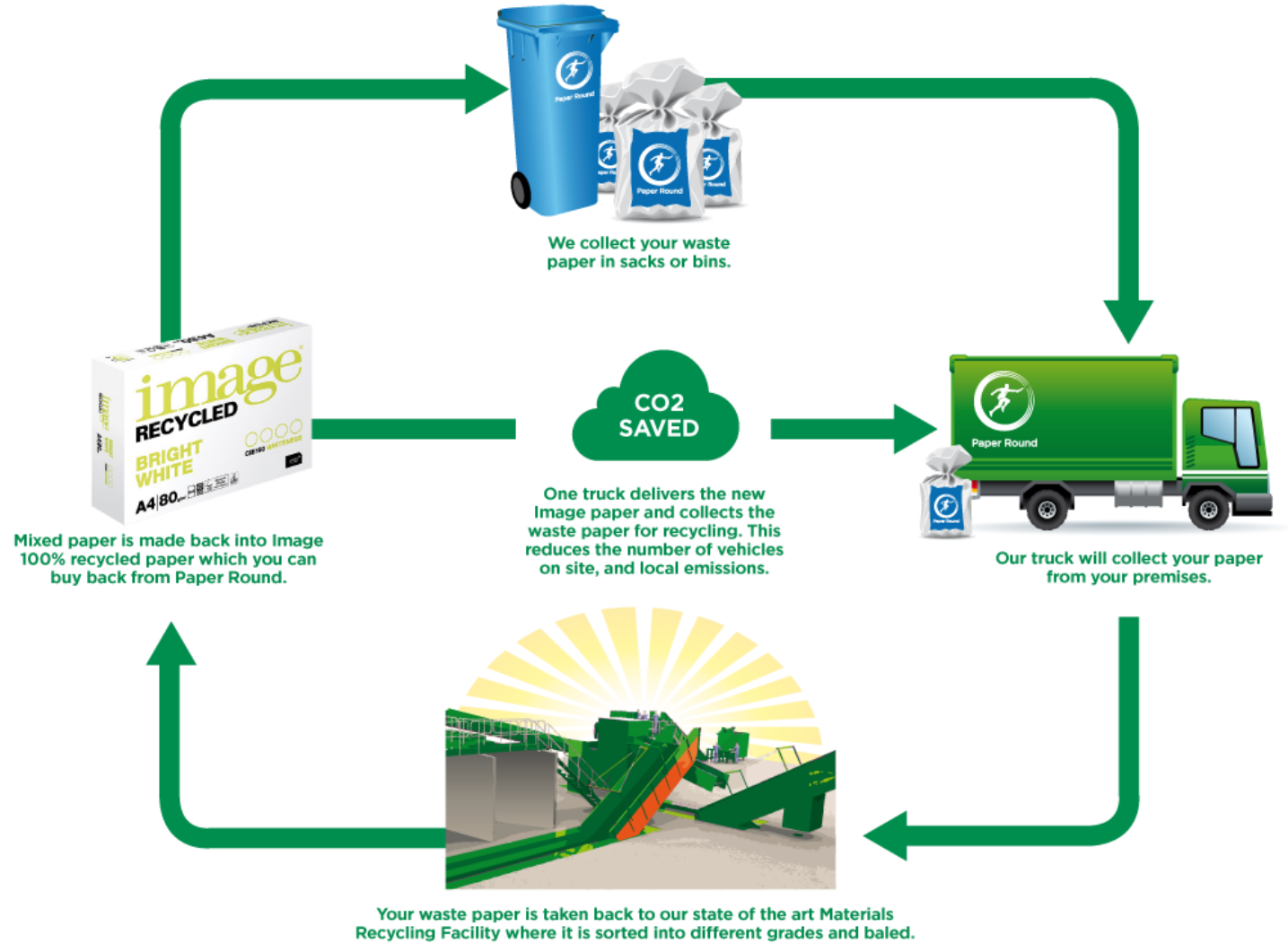
# Where does your recycling go?

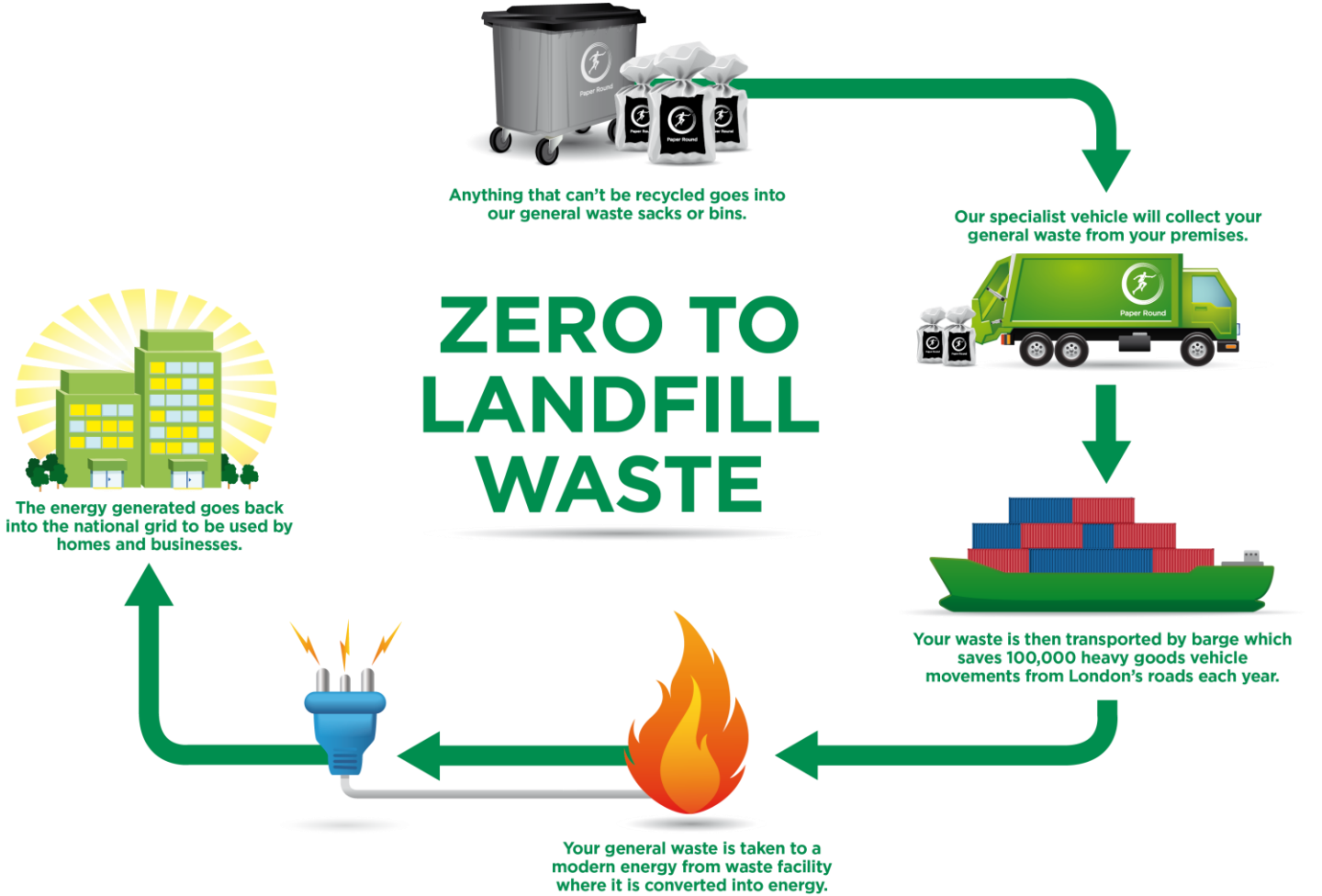






# PAPER RECYCLING







# What can go in the mixed recycling bin?





# AVOID CONTAMINATION

## ✓ Acceptable materials



All types of paper



Drink & food cans



Pots, tubs & trays (not black)



All types of cardboard



Plastic bottles (lids & caps on)

All items must be dry and free from food and liquid residues.

# Food



Contaminates fibres

Prevents cans and plastics being sorted effectively

Every tonne of food waste recycled by anaerobic digestion as an alternative to general waste prevents between 0.5 and 1.0 tonne of CO<sub>2</sub> entering the atmosphere

# Unwashed Pots Tubs and Trays



Should be washed and dried

Food and oil can contaminate paper fibres

Paper containers contaminated with food cannot be recycled and must be disposed of as general waste

# Recyclable Materials Wrapped in Film

When these thin plastic films enter a conventional materials recycling facility (MRF), they can seriously harm the efficient operation of plant and machinery

The collection, separation and reprocessing of plastic film is not widely implemented in the UK

End markets for the recycled material is limited



# Glass



Health and Safety

Broken Shards

Infinitely Recyclable

# Recycling logos



← Producer contributes to a packaging recovery scheme



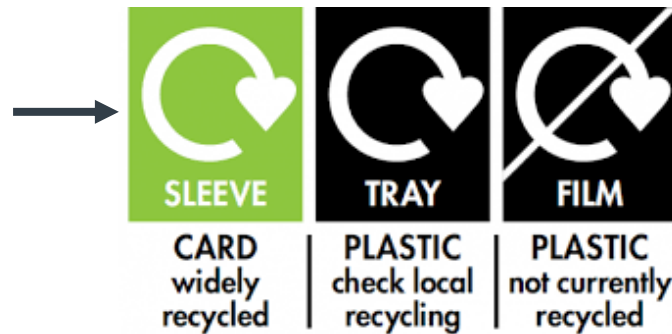
← The dreaded mobius loop

Resin identification codes (RIC) →



Not recycled by all LAs

Recycled in 75% or more of local authorities (LAs)



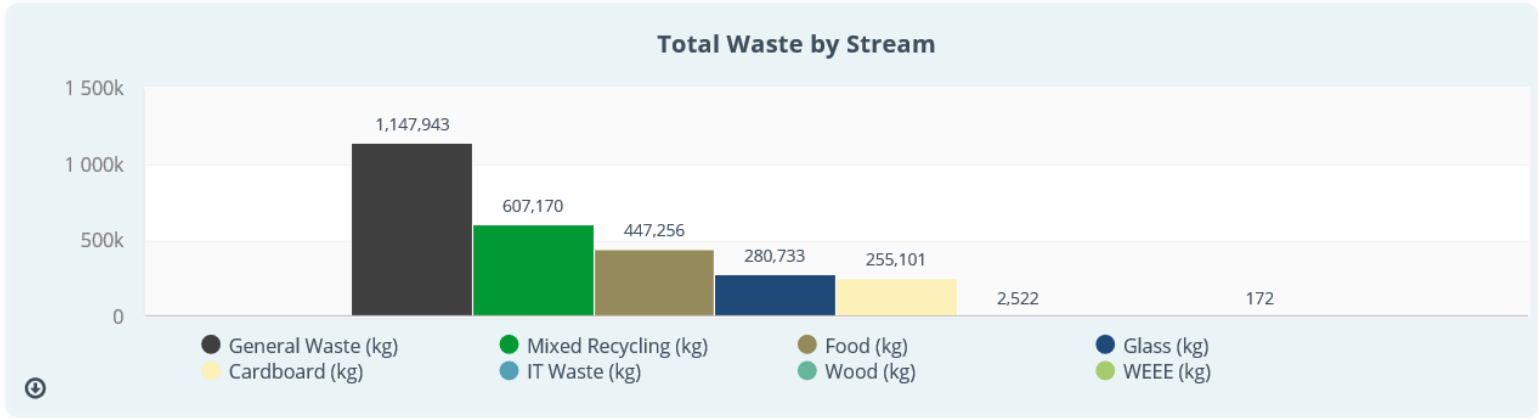
← Recycled by less than 20% of LAs



# How is Regent St doing?



# CURRENT RECYCLING RATES



### Total Waste Recycled

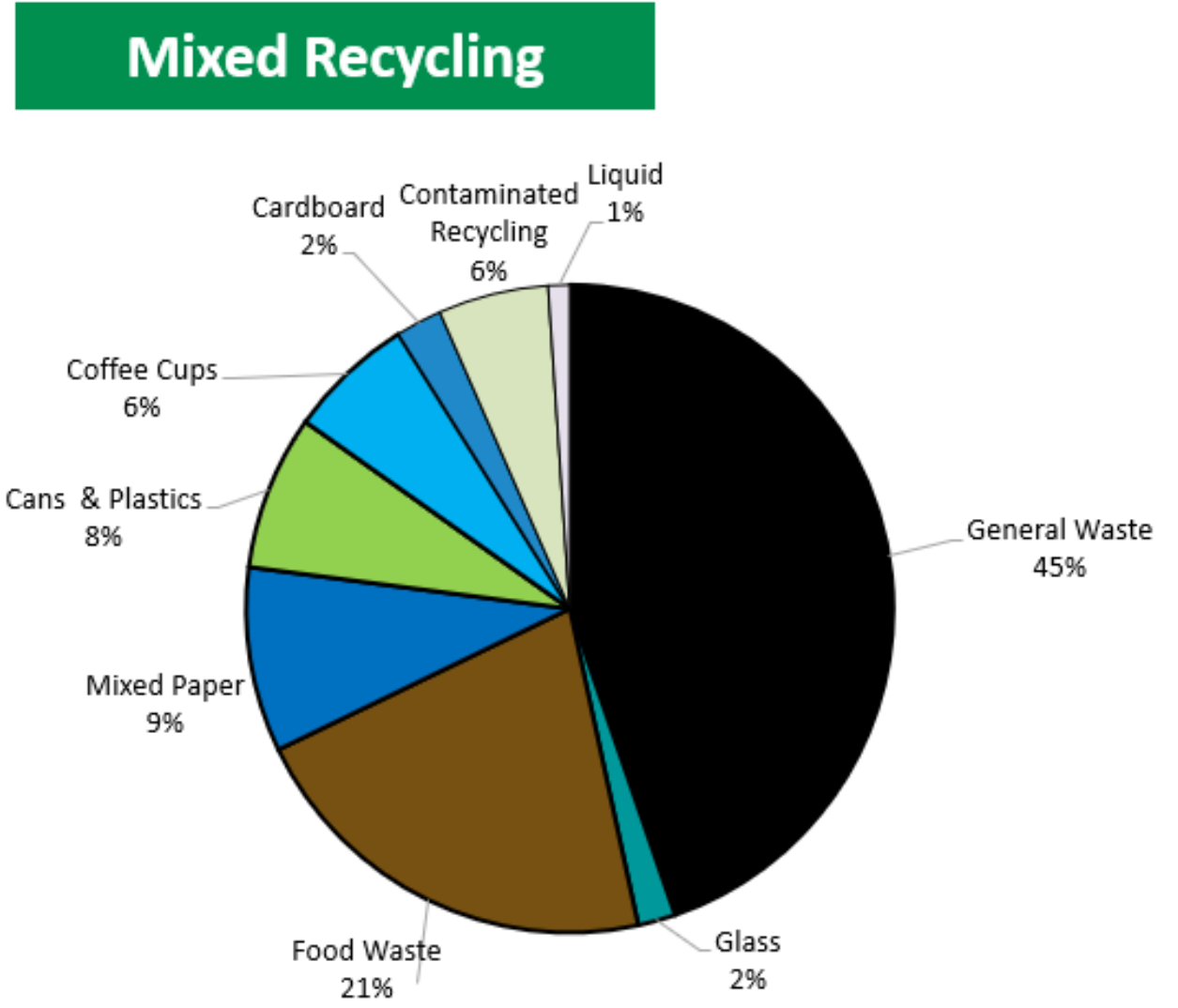
**57.52%**





# Example waste audit

The optimum way to reduce contamination is to use source separated recycling





# Challenges and new initiatives



# New initiatives



- Waste and resources strategy
  - Extended producer responsibility
  - 30% recycled content by 2022
  - Separating food waste compulsory by 2030
- Plastic Pact – reduce plastic use and drive up recovery
- UK Incineration Tax

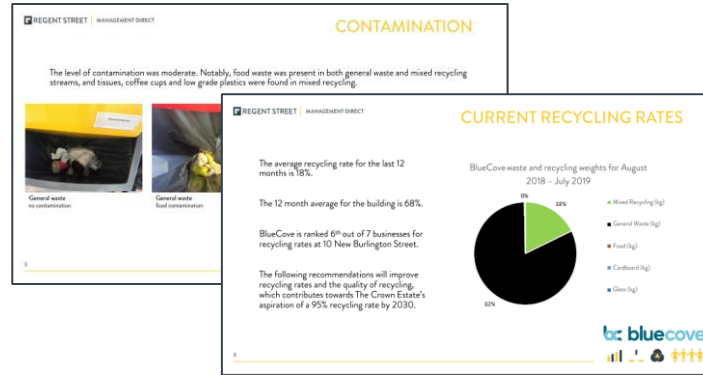
## Resources

Lunch and learn sessions, staff training, seminars



*We can help staff understand what can and can't be recycled through training sessions and workshops*

## Recycling improvement plans



*We can conduct floor walks to assess bin use, signage and contamination and create a bespoke recommendations report*

## Launch days



*We can launch your new recycling scheme with games and competitions through an engagement/education stand in an office break area*