

05/07/2022

Recycling webinar: Do you know where your waste goes?

Rory Capper, Head of
Sustainability at Recorra



- 01 Introduction
- 02 Why do we recycle?
- 03 Waste Hierarchy
- 04 Where does your recycling go?
- 05 Contamination
- 06 Tips for home & work
- 07 Get involved

- We are local
- Founded by Friends of The Earth
- Sustainability and social value
- London specialists



WHY?



Reduces waste:
It takes 500 years for plastic to fully decompose

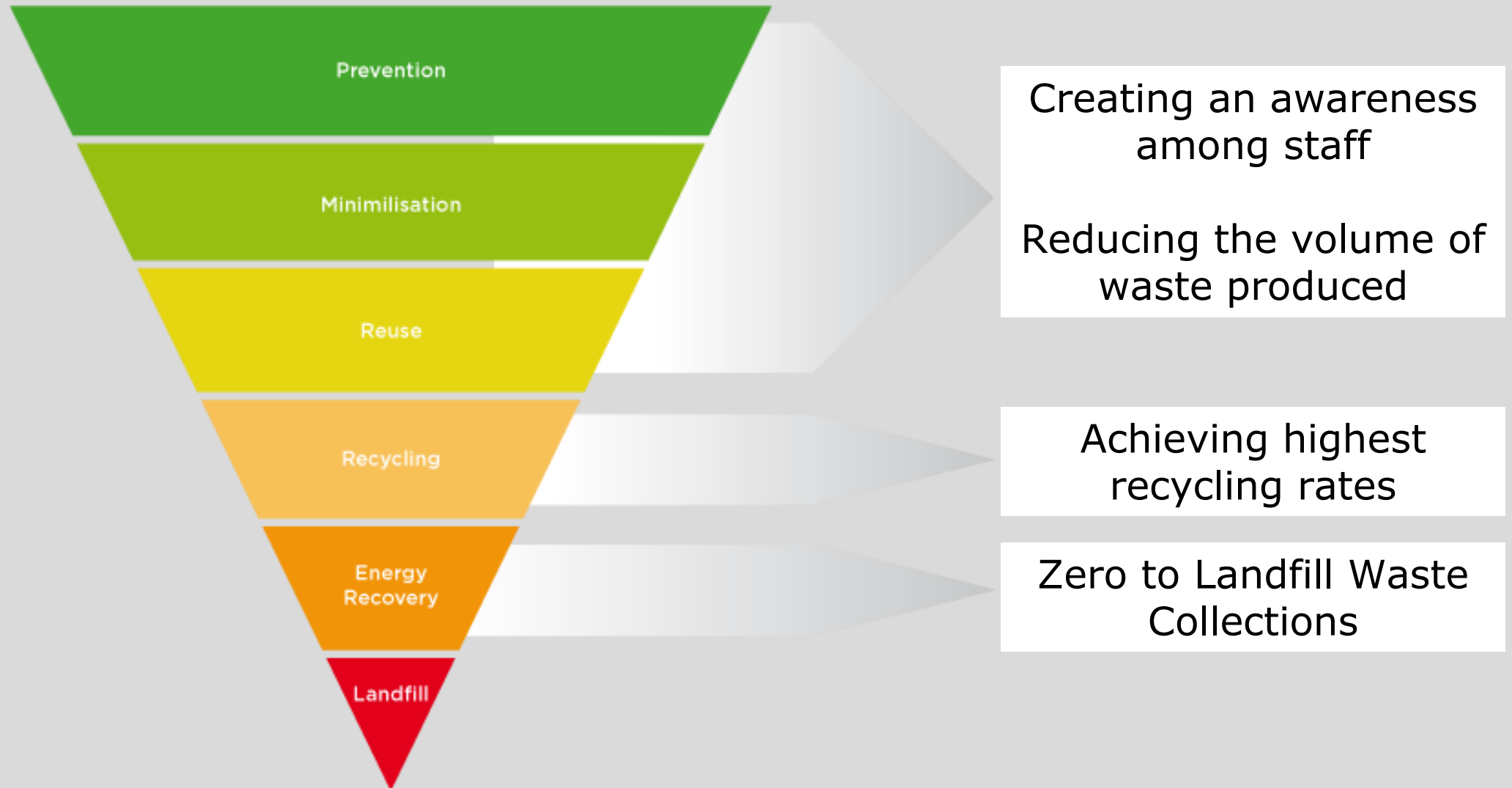
Conserves resources:
If all food waste in the UK was sent to Anaerobic Digestion, it would power 950,000 homes

Legal obligation

Why do we recycle?

Protects the environment:
1 tonne of recycled glass, saves 580kg of CO₂e being released into the atmosphere

Saves energy:
It takes the same amount of energy to make one new aluminium can as it does to recycle 20





The Waste Revolution!

Introducing the Environment Act

- Landmark changes in waste legislation
 - Extended Producer Responsibility
 - Deposit Return Scheme
 - Plastic Tax – 30% recycled plastic
 - **Compulsory source segregation**



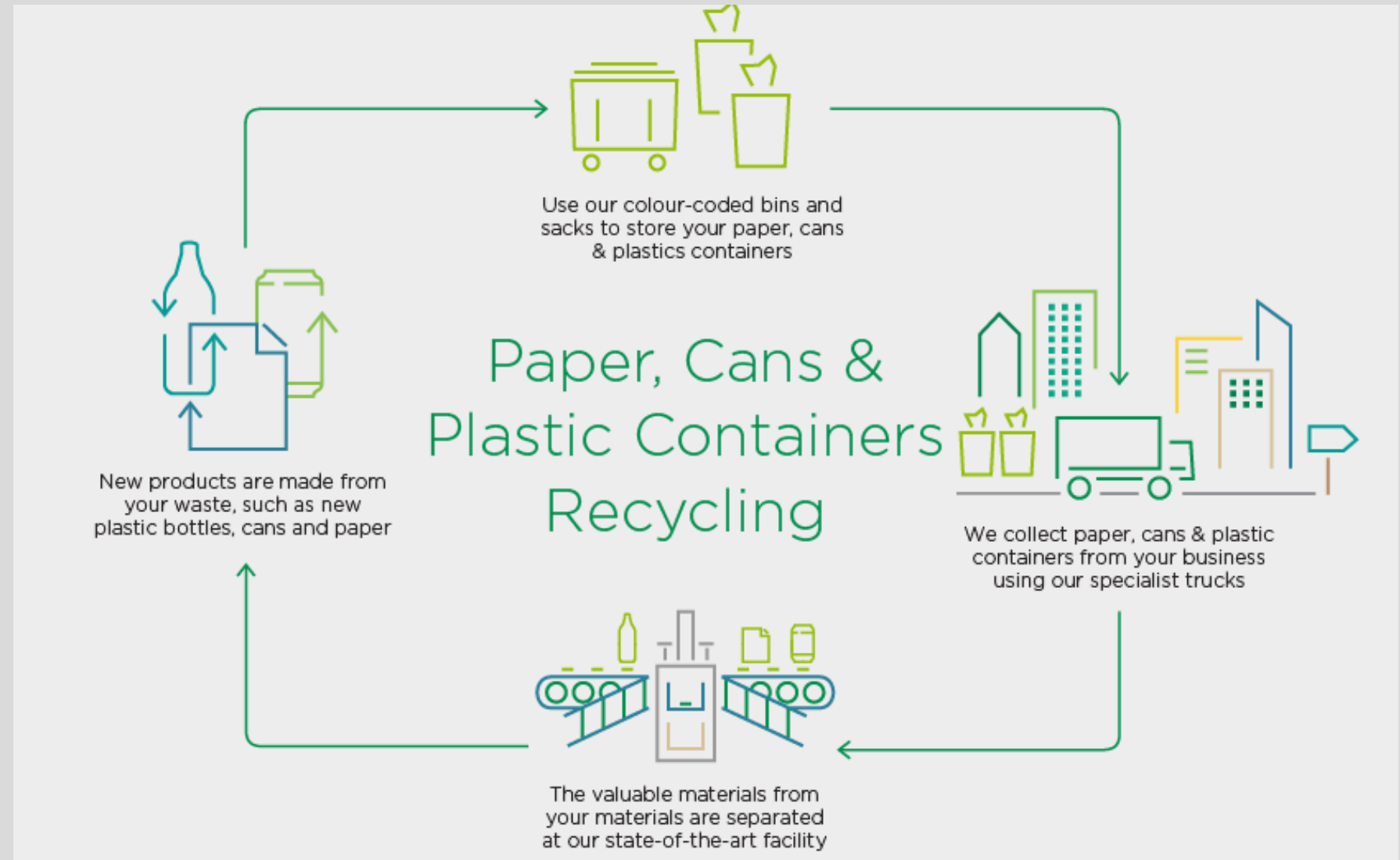


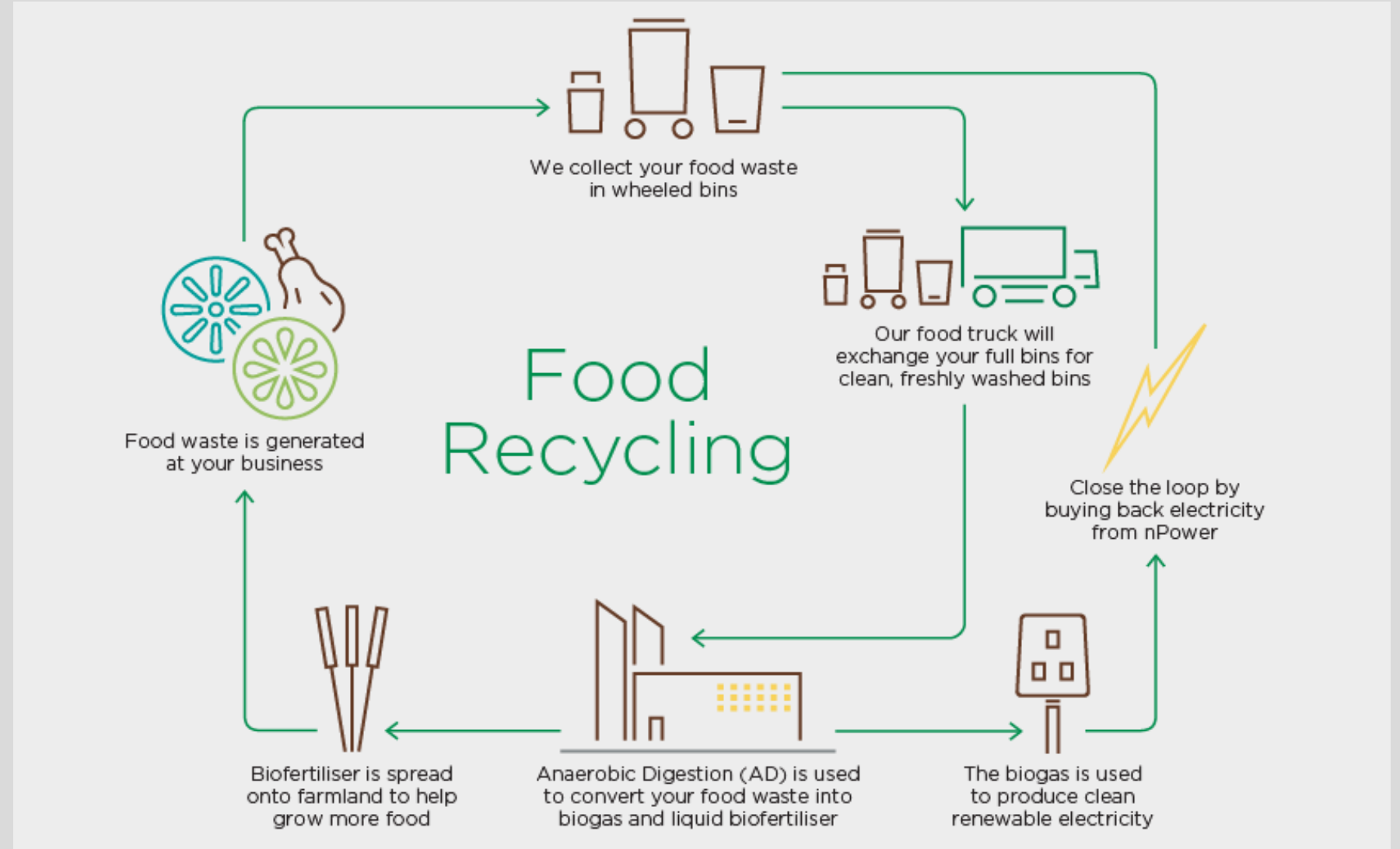
Where does your recycling go?

Transparency

- Fewer miles = less CO2 and more transparency
- Transparency in onward processing
- Quality material can be processed more locally
- Reduce reputational risk
- Facility visits to provide assurance







Partnership with FareShare

FareShare is a food redistribution charity that provides unwanted food to thousands of charities across the country

For every food waste collection, we donate 25p on behalf of our customers, which is enough to provide a meal for one vulnerable person

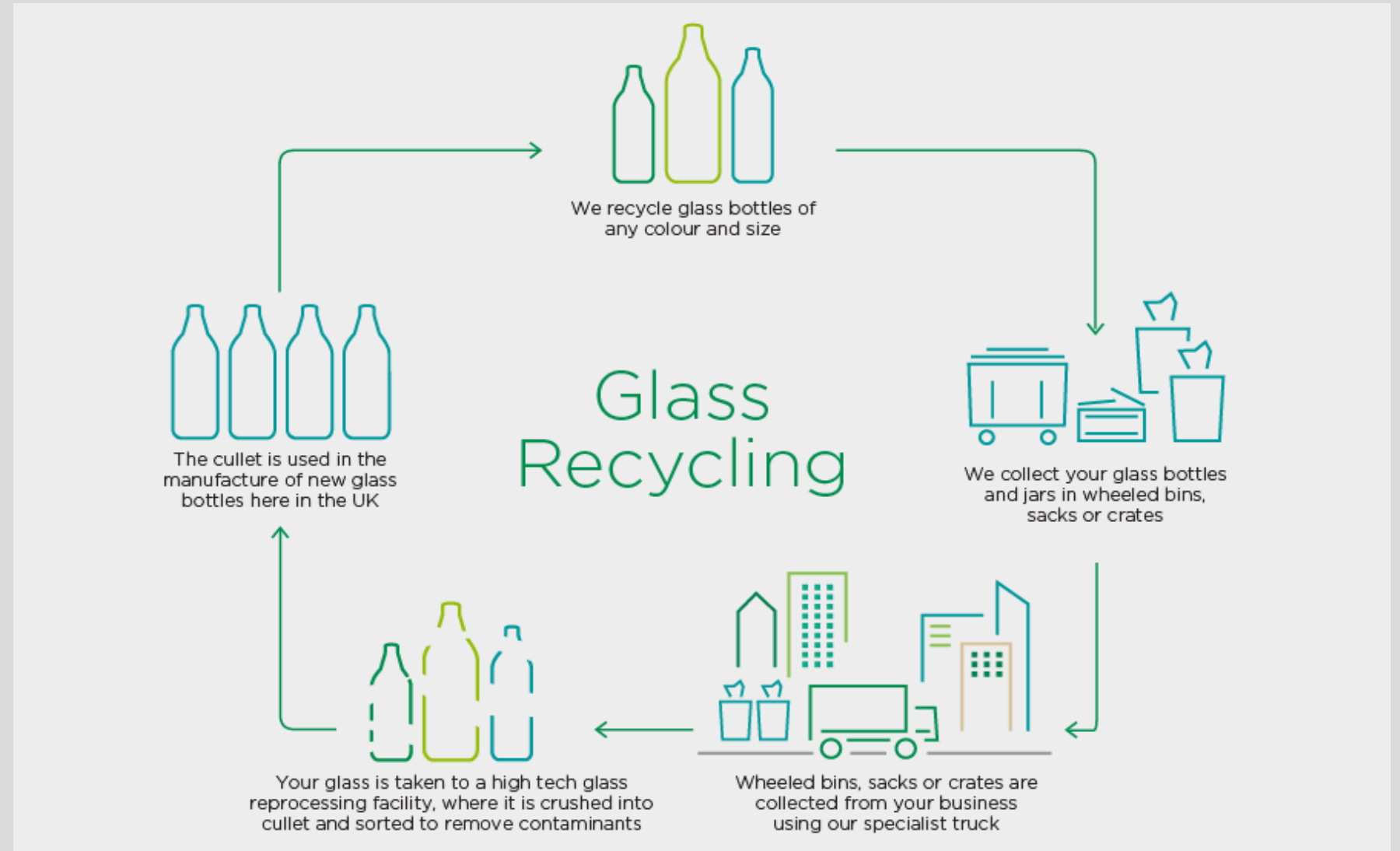
2019 = 1721 meals

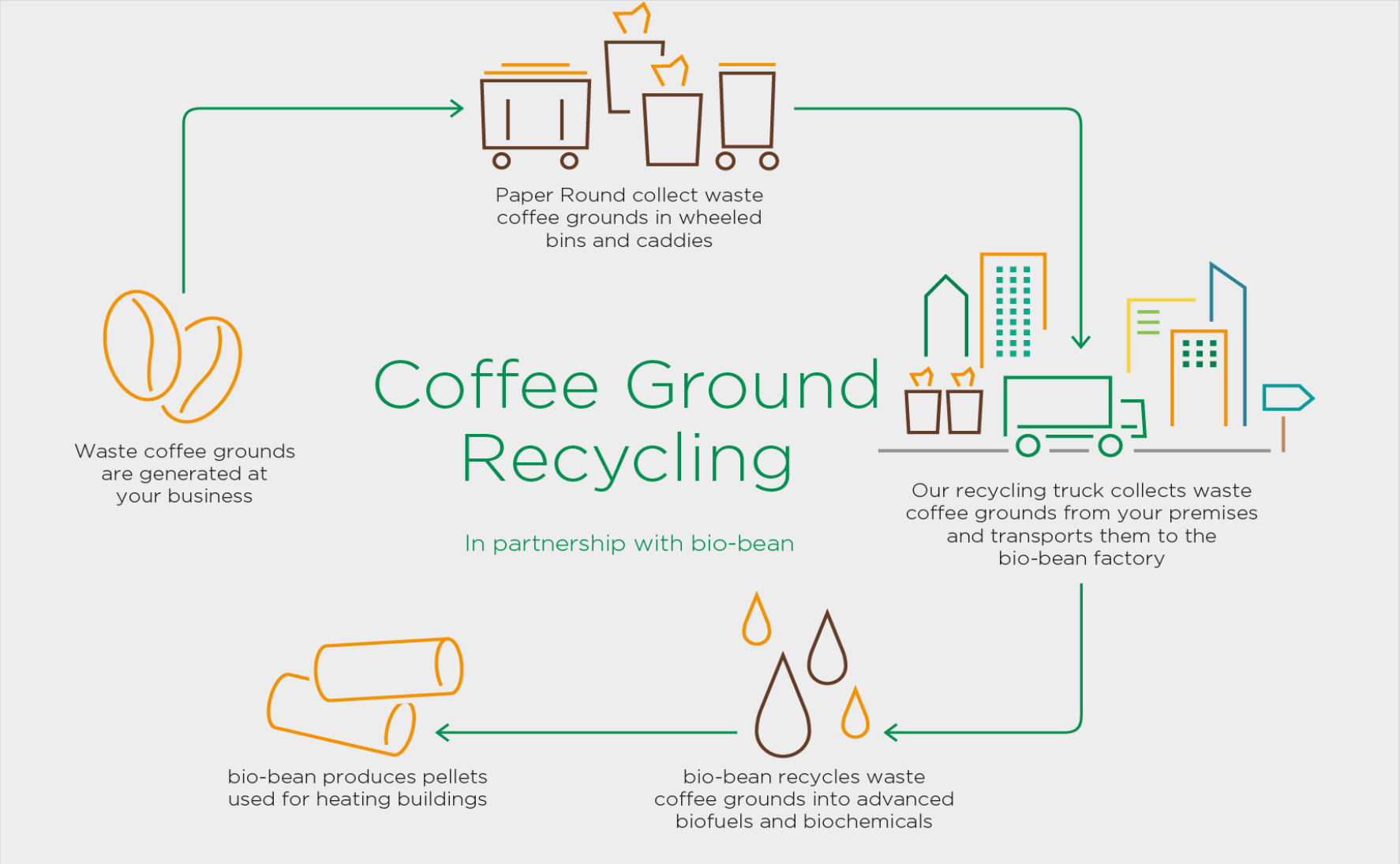
2021 = 582 meals

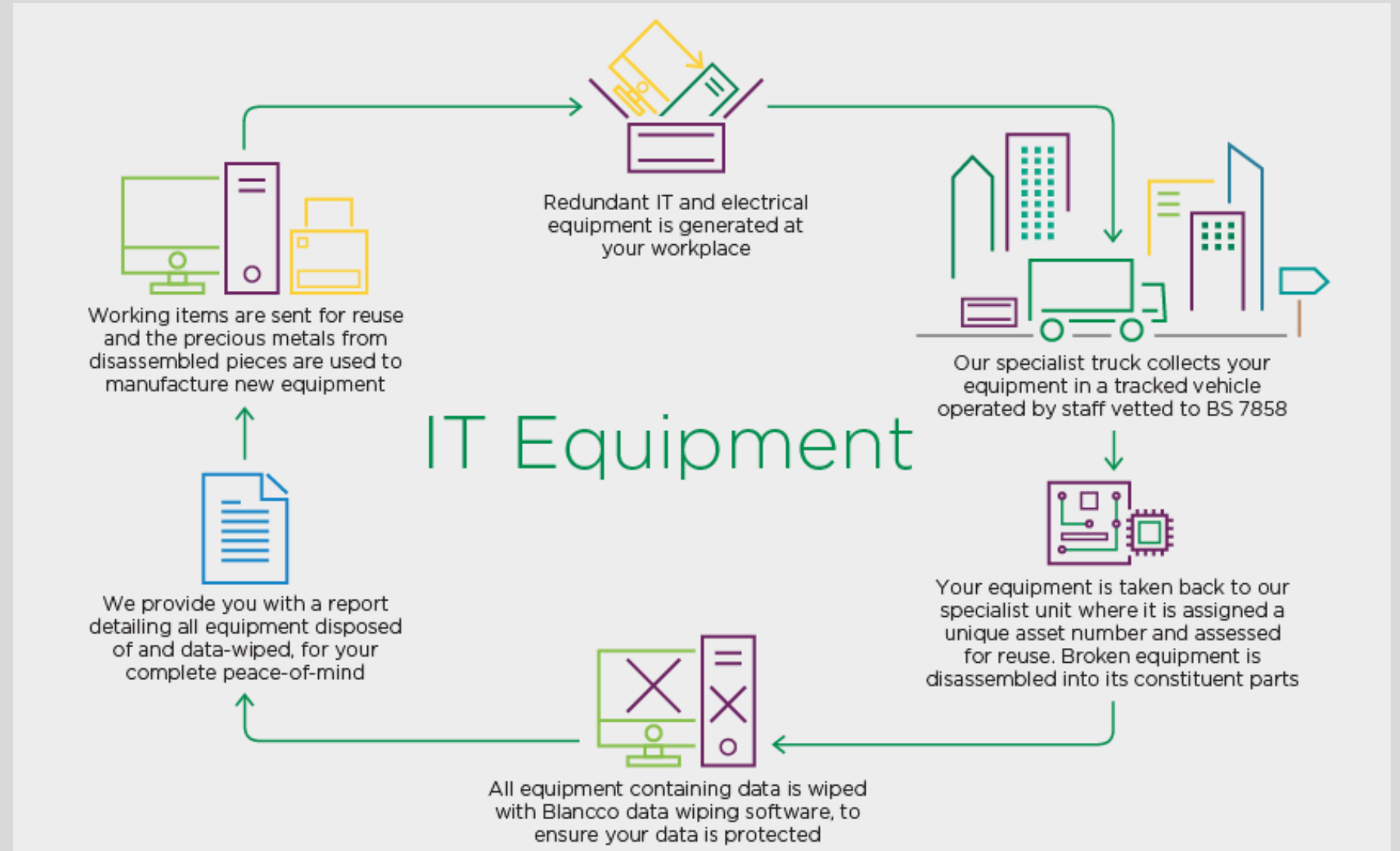
Volunteer with us

Environmental Beach Cleans











What is Contamination?

- A material in the wrong waste stream
- Accepted material prepared in the wrong way

✓ Acceptable materials	✗ Banned materials
 <p>All types of paper</p>  <p>Drink & food cans</p>	 <p>Food waste</p>  <p>Glass bottles & jars</p>
 <p>All types of cardboard</p>  <p>Plastic bottles (lids & caps on)</p>	 <p>Black bags</p>  <p>Tissue - blue & white</p>  <p>Coffee cups</p>
 <p>Pots, tubs & trays (not black)</p>	 <p>Plastic film, crisp packets & wrappers</p>  <p>Shredded paper</p>
<p>All Items must be dry and free from food and liquid residues.</p>	<p>If mixed recycling regularly contains more than 5% banned materials, we will have to collect it as general waste and charge accordingly.</p>

ACTIVITY: CAN WE RECYCLE THESE ITEMS?

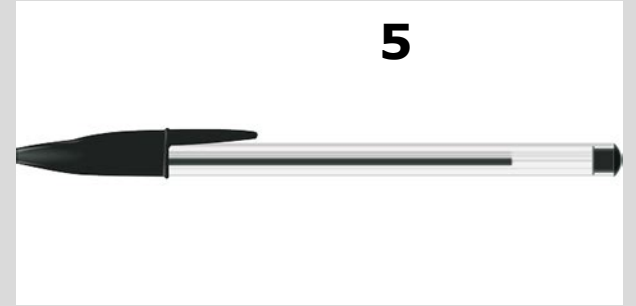
1



3



5



2



4



6





Education to avoid
Greenwashing

A-world app

'Loop' returnable packaging

Separate your food waste –
council collection or compost

Meal plan & only buy what you need

Buy second-hand



BE BOLD AT WORK!

Positive ambition loop

Push for change!

Go beyond compliance

Set ambitious targets

Create a green team

Track recycling stats

- Join a MRF Tour – [sign up here](#)
- Beach Cleans in July & August [sign up](#)
- Enter our [sustainability competition](#)
- Sustainability comms including monthly newsletter, [sign up here](#)
- [Recycling resources](#) on our website
- Contact us if you would like a bespoke recycling improvement plan

